

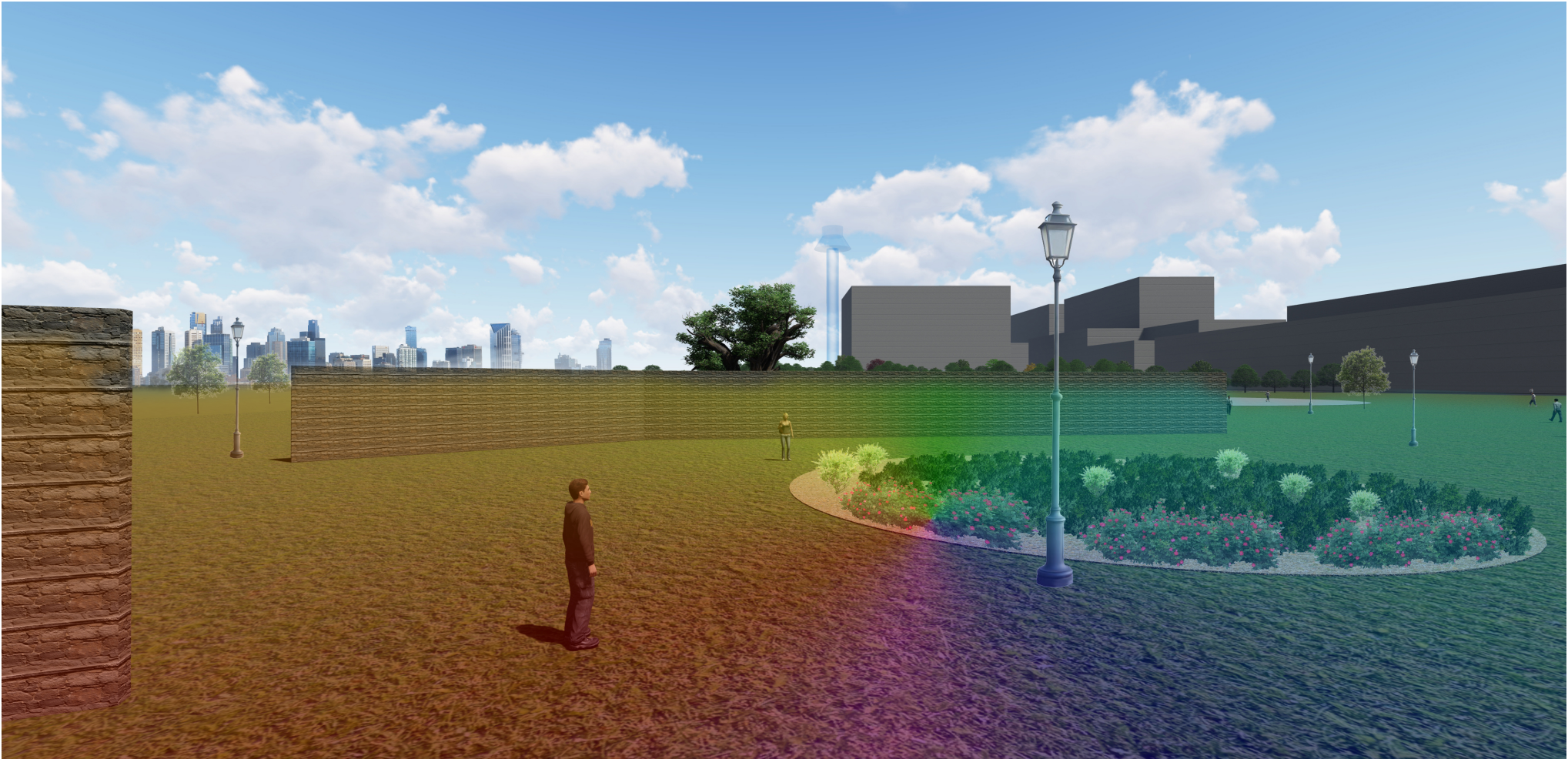


The masterplan of 2050 Melbourne green rehabilitation centre

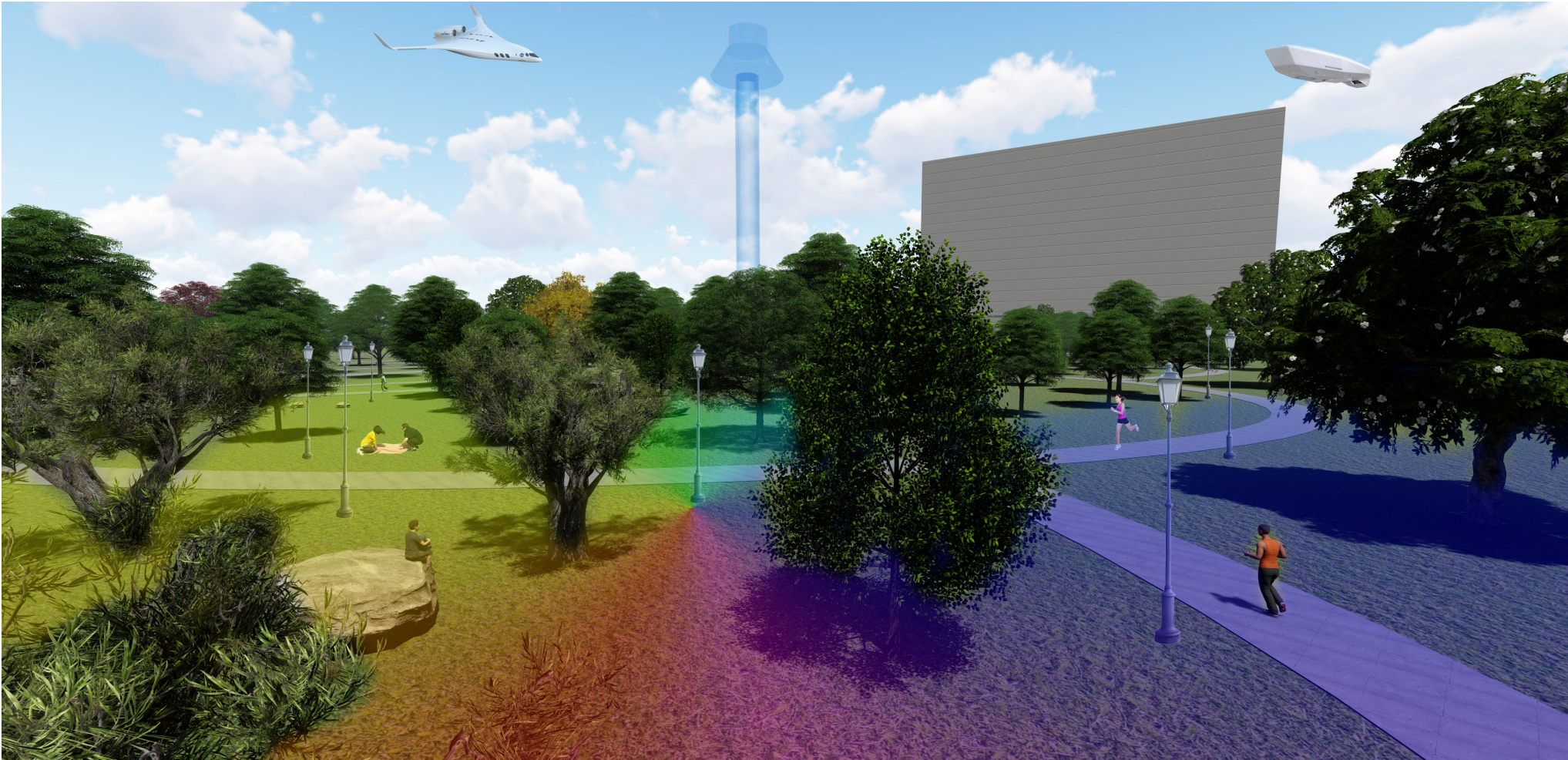


The concept diagram of 2050 'Melbourne green rehabilitation centre'

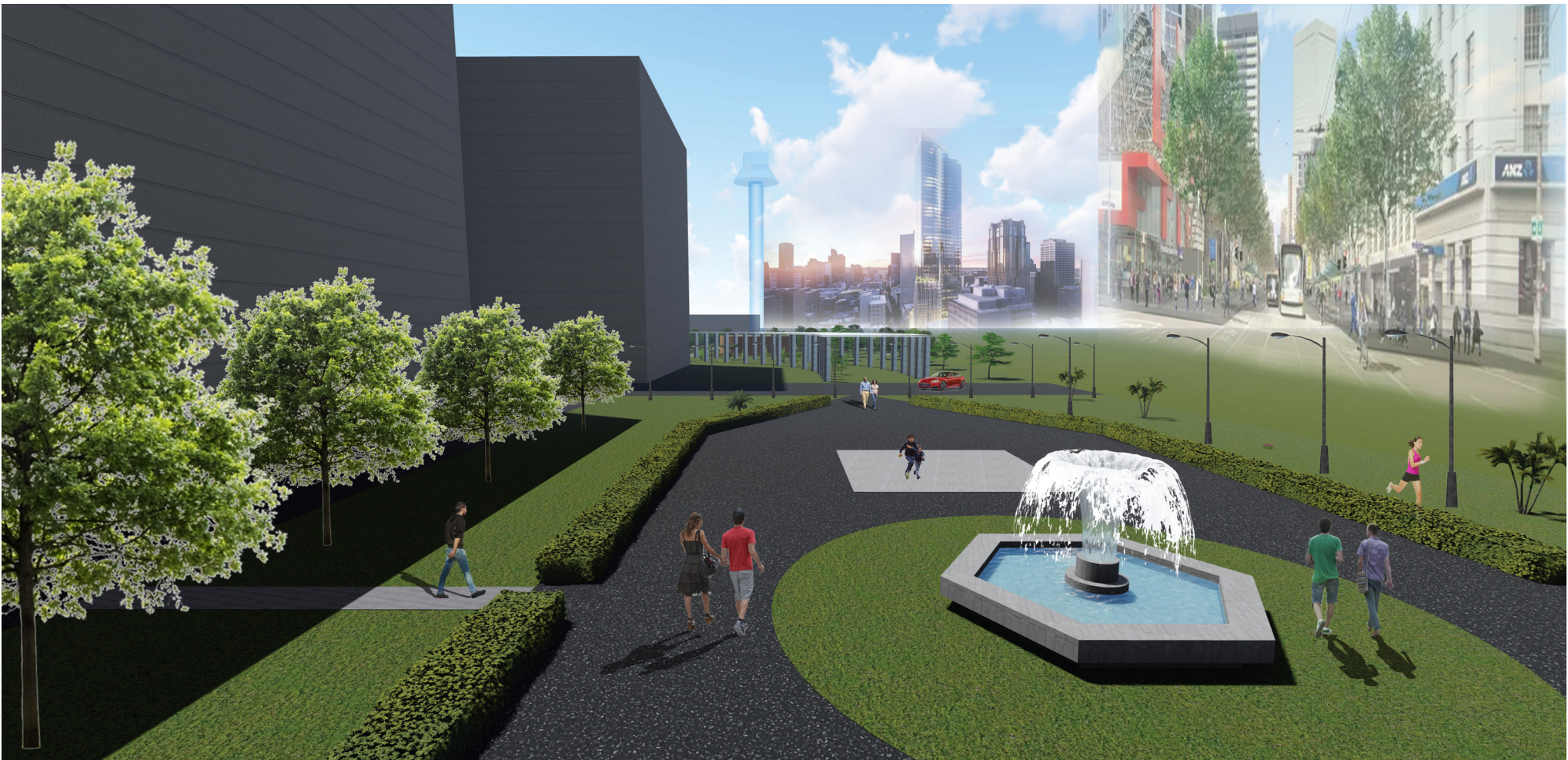
- (Brain)** The playful garden, it has the different geometric shape of walls and creates the special circulation for the visitor to enjoy
- (Facial)** The clean lawn with the public sitting areas. The plan looks like a smiley face which can make people calm
- (Lungs)** The healthy walk space, it fills with vegetation which can provide enough fresh air can lead to mitigate the stress
- (Heart)** The lookout space, it is the central area of the whole park and the tower is higher than the surrounding buildings, it can see the view of CBD
- (Liver)** The shaded space, it has the shelter engages some species and vegetation and the roof uses ETFE air cushion
- (Stomach)** The symmetric garden, the shape responds to the general shape of the stomach
- (Kidney)** The fountain park, it is the playful program for people to release their stress and also exercise
- (Intestines)** The healthy walk, it is the winding pathing that people can get close to nature and adjust their emotion
- It is the existing reserve and it will remained until 2050
- (Low part of the body)** The existing sport field, it will remained until 2050 because it relates to the big concept, people can play sport to overcome the psychology issues



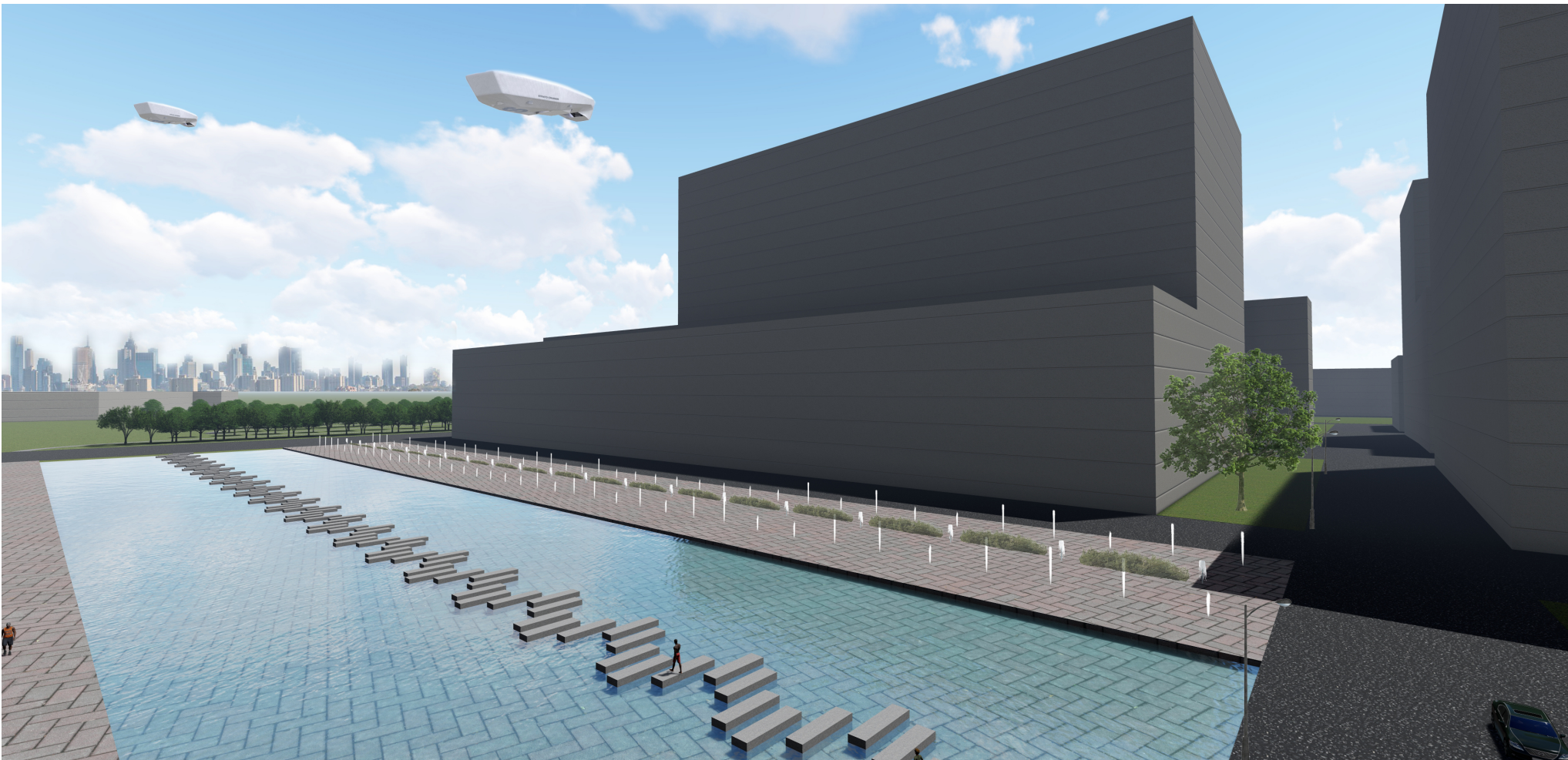
(Brain) Playful Garden



(Lungs) Oxygen walk



(Stomach) Symmetric Garden



(Kidneys) Fountain park