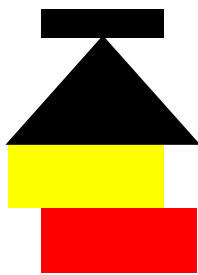


Design Studio:Eora Gallery II--Redfern

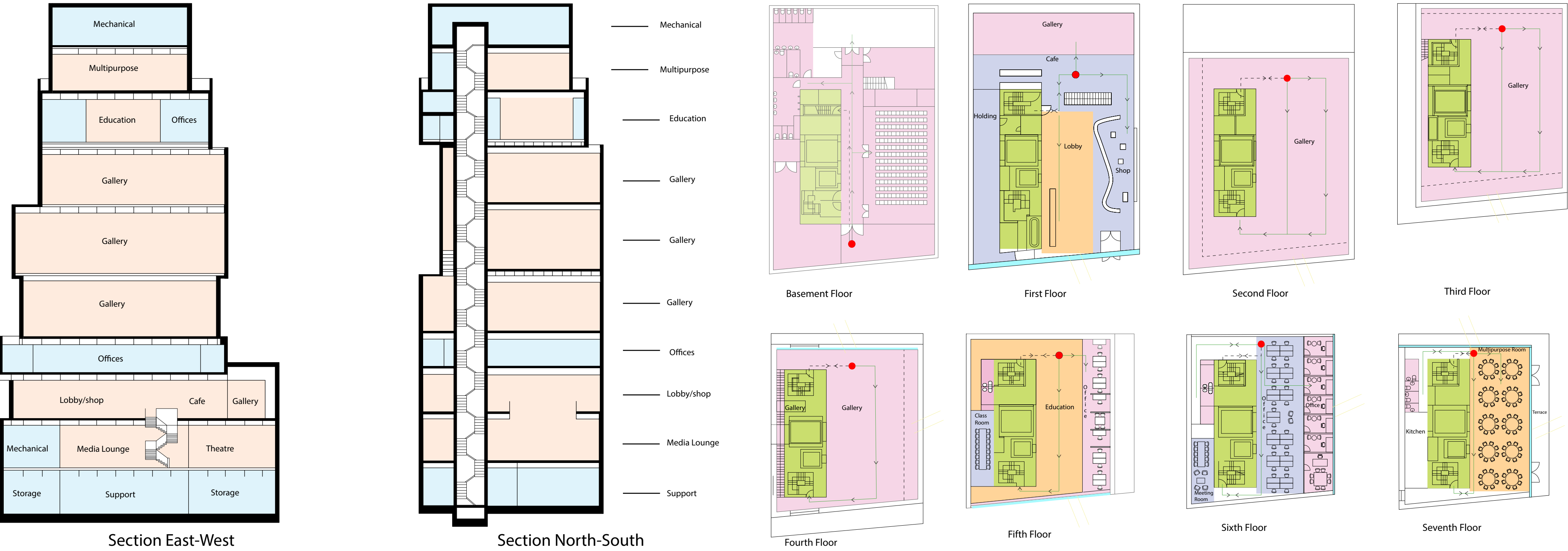
Yiheng Fu (West)--12096588

Redfern Terrace locates near to the Redfern train station,it had built around 130 years, it is one of the major public art projects making up Eora Journey at key sites within the city. it would be created by aboriginal artists, the initial aim to reactivate the knowledge of the culture in Aboriginal history. This project around the artist whose name is Bronwyn Bancroft, she will be the cilent for this project to create her own museum within existed Terrace to develop the Aboriginal culture. In addition, It also refers to site response; the case study of New museum in NY and Existed Terrace analyse to be the main elements to design this project. The museum is not only for artist's museum, but also is the public place. The artist has various occupations so that the museum includes many programmes in order to make people know deeply about the Aboriginal artwork.



Case Study

1. New Museum in New York (Precedent)

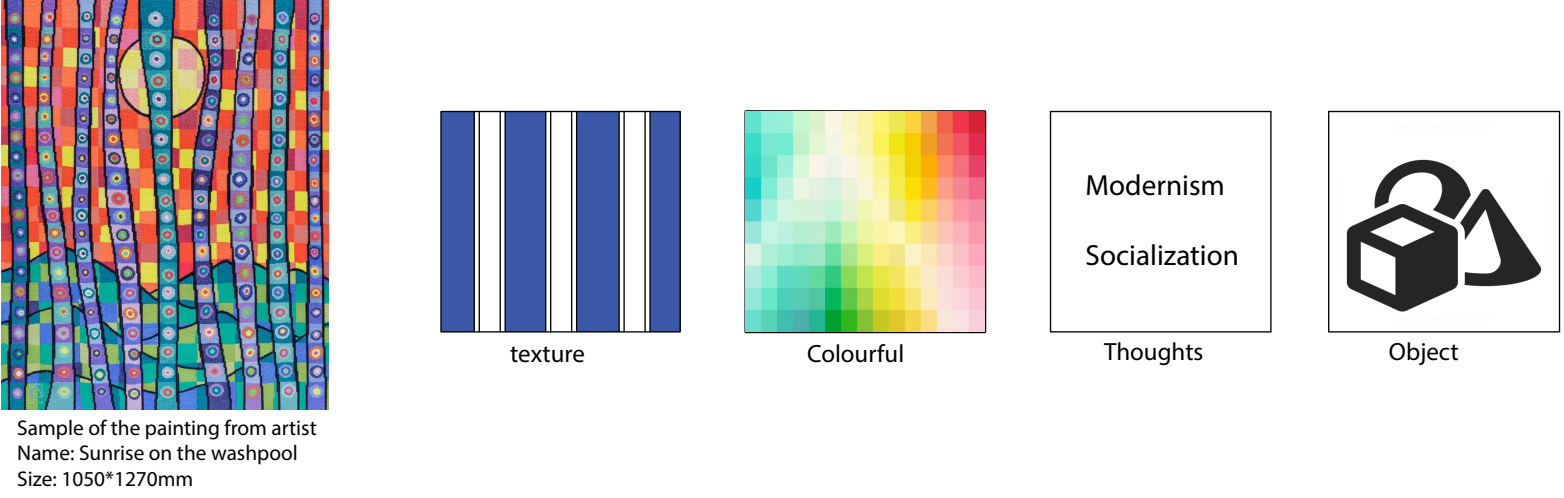


1.A--The two sections of the precedent

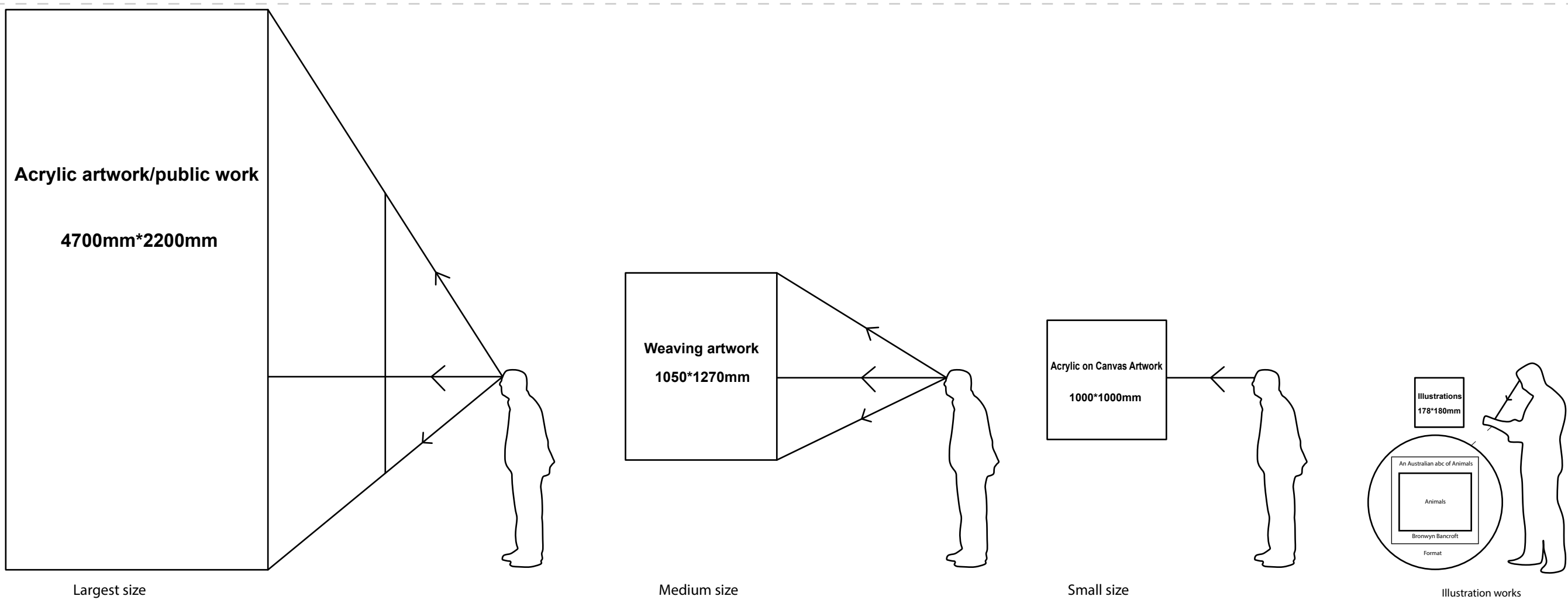
1.B--The floor plans of the precedent9With circulation)

2. Artist

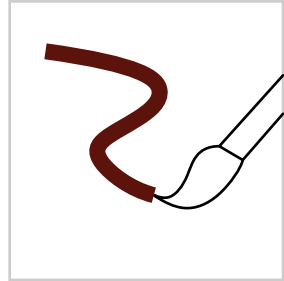
2.A. Generally information



2.B--Features of her artwork



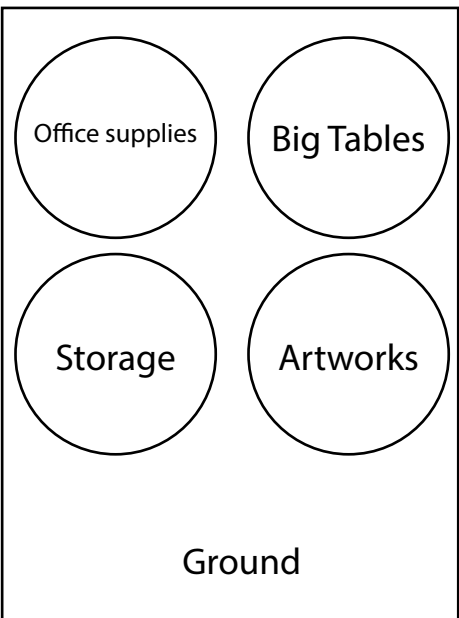
2.C--The size of the artwork from artist



hand-printed fabrics



2.D--The cloth design from the artist



2.E--Elements of the artist working space

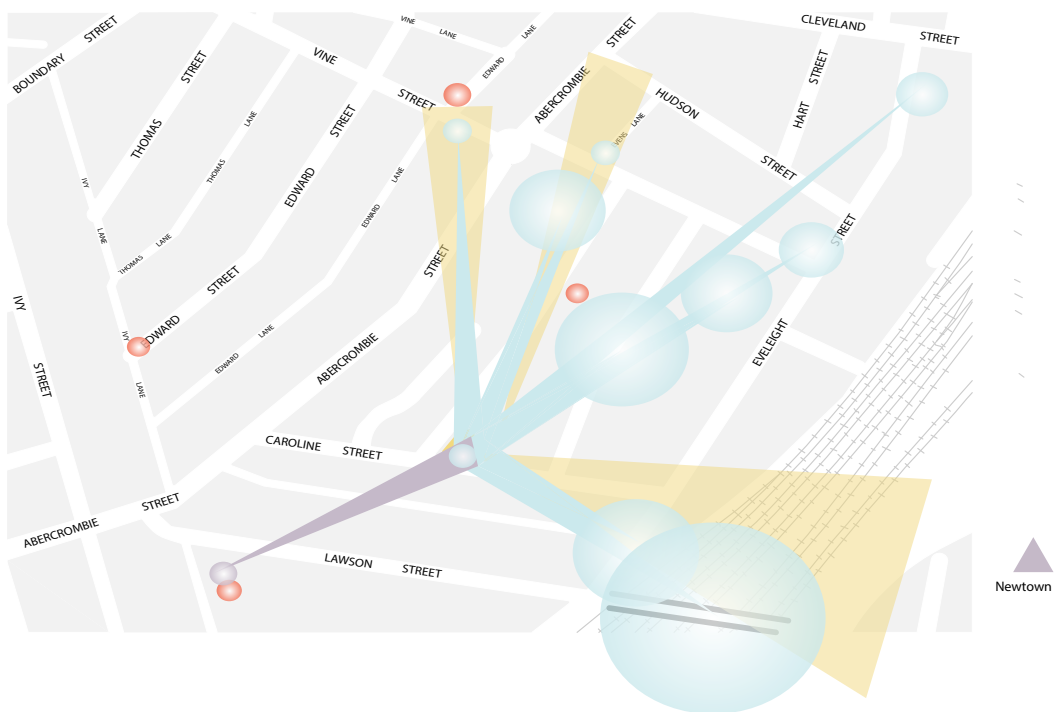
3. Site Analyses



3.A--Public(Community and ground) and private(Residential house) area around the Terrace



3.B-- The sunlight reflection in site



3.C-- Distribution of the artworks around the Terrace (Medium site map)